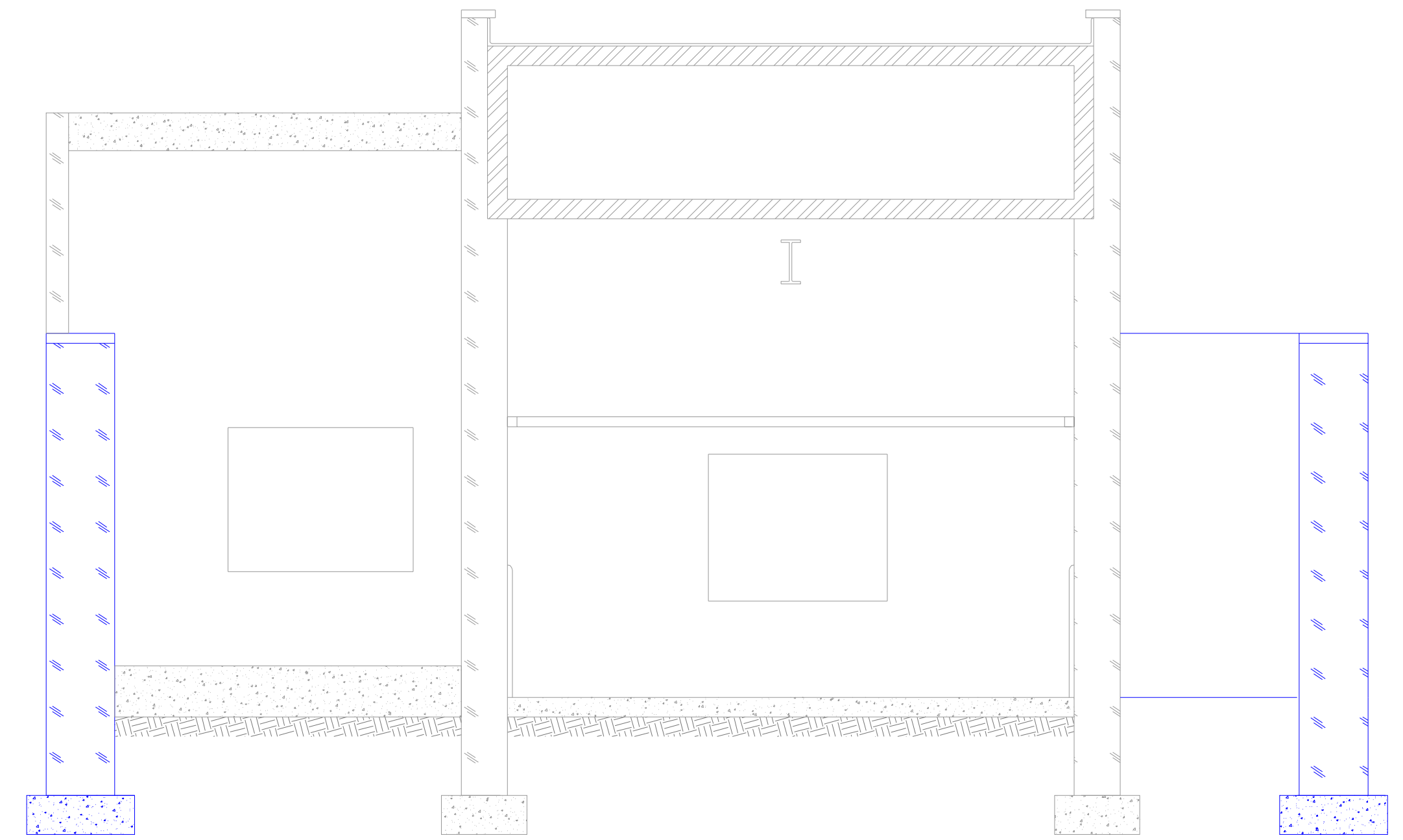
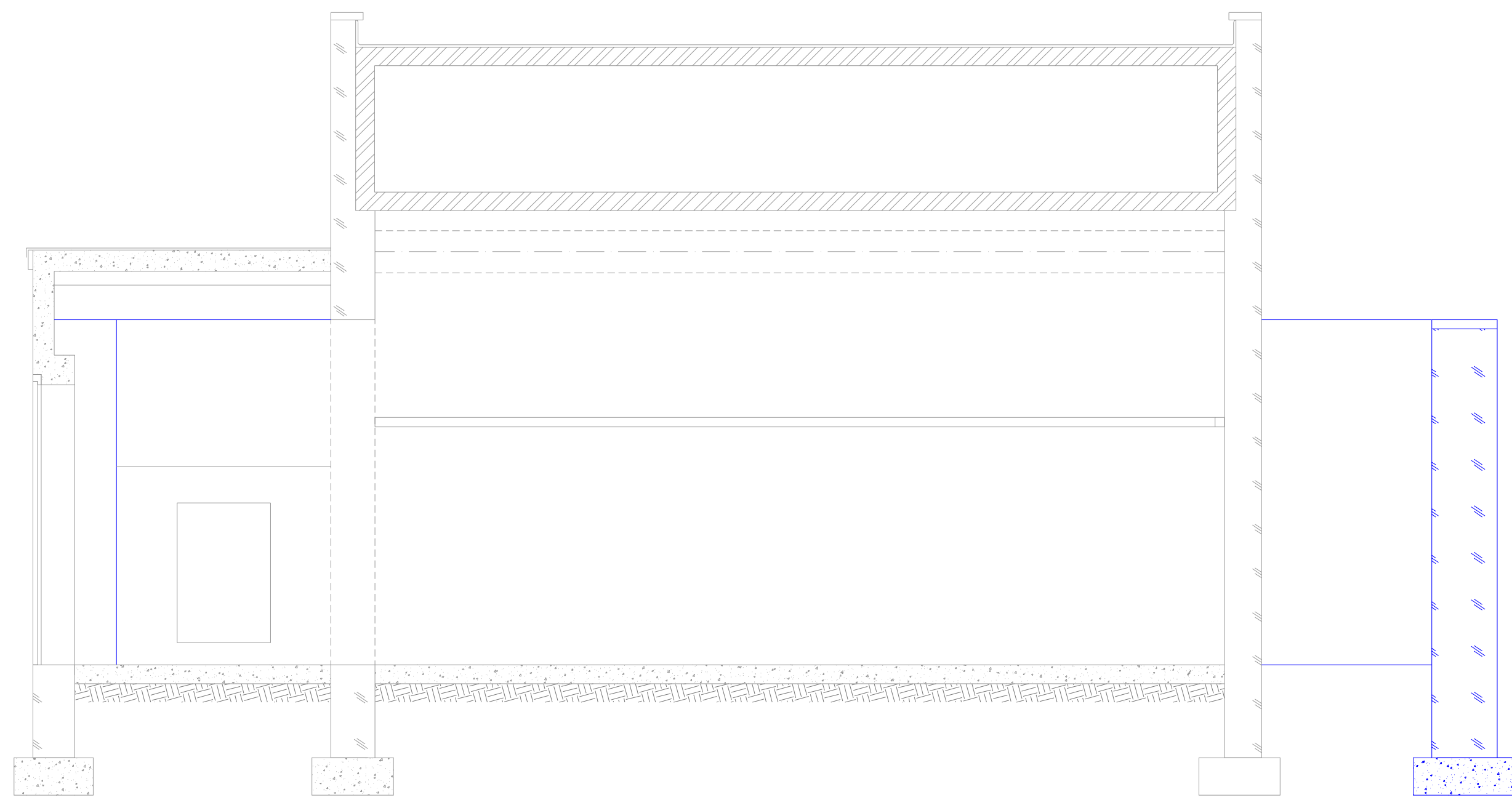


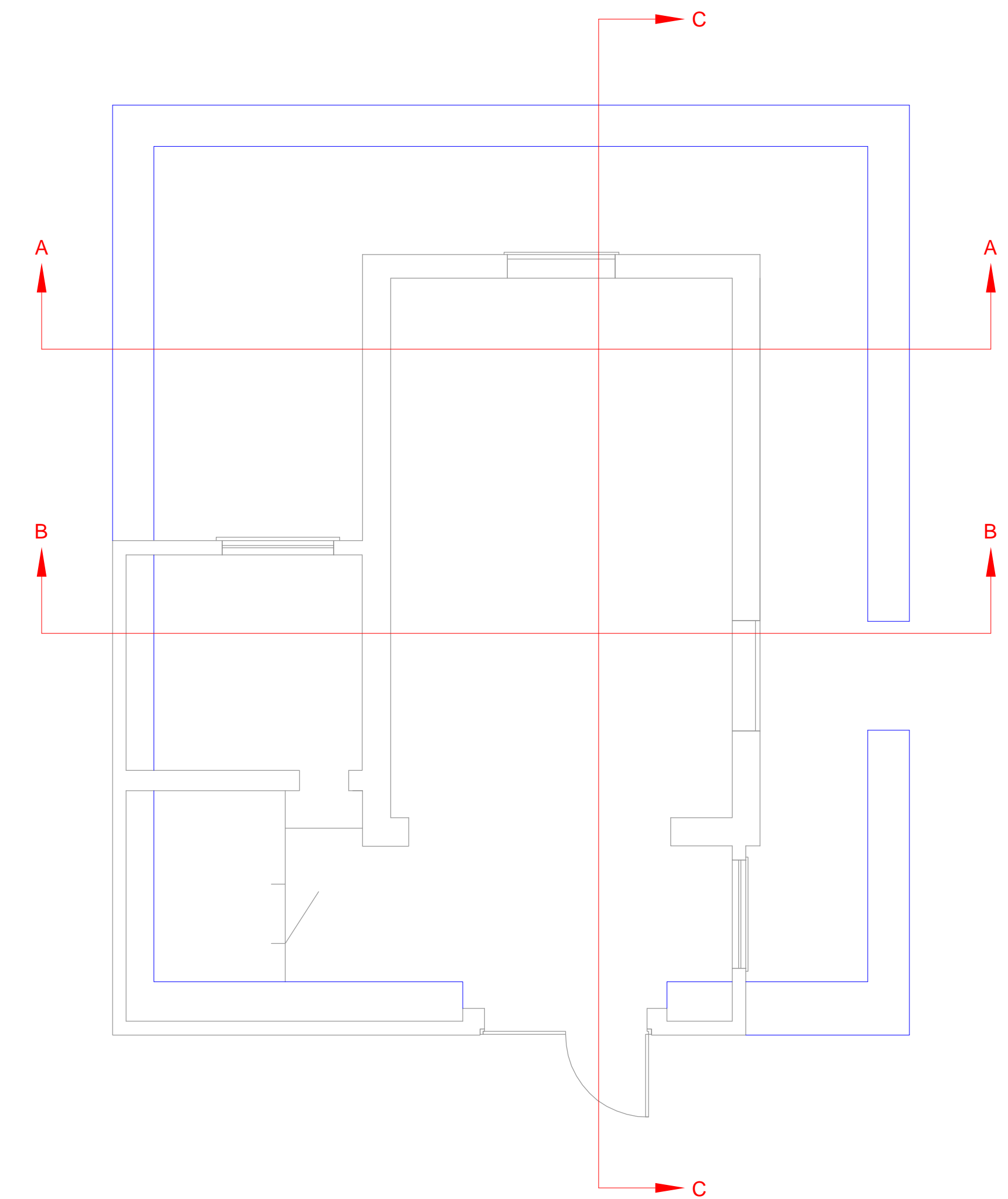
Section A-A
(South East)



Section B-B
(South East)

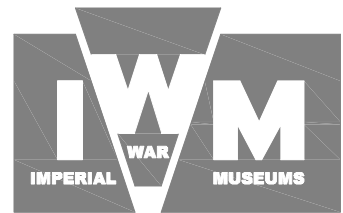


Section C-C
(North East)



FACILITIES MANAGEMENT

**BUILDING 173 -
SECTIONS**



Facilities Management Tel: 020 7840 9601
Walnut Tree Walk Fax: 020 7840 9616
LONDON SE11 6DN

COPYRIGHT© DO NOT SCALE DRAWING
DIMENSIONS MUST BE VERIFIED

Description			
Section A-A, Section B-B (South East) & Section C-C (North East)			
Building:		Level:	
DUXORD - BUILDING 173		-	
Design:	Drawn:	Checked:	Approved:
	B.J.P.		
Scale:	Date:	Drawing No.	Rev.
1:50@A1	04.10.12	DUX-B173-S-001	

NOTES