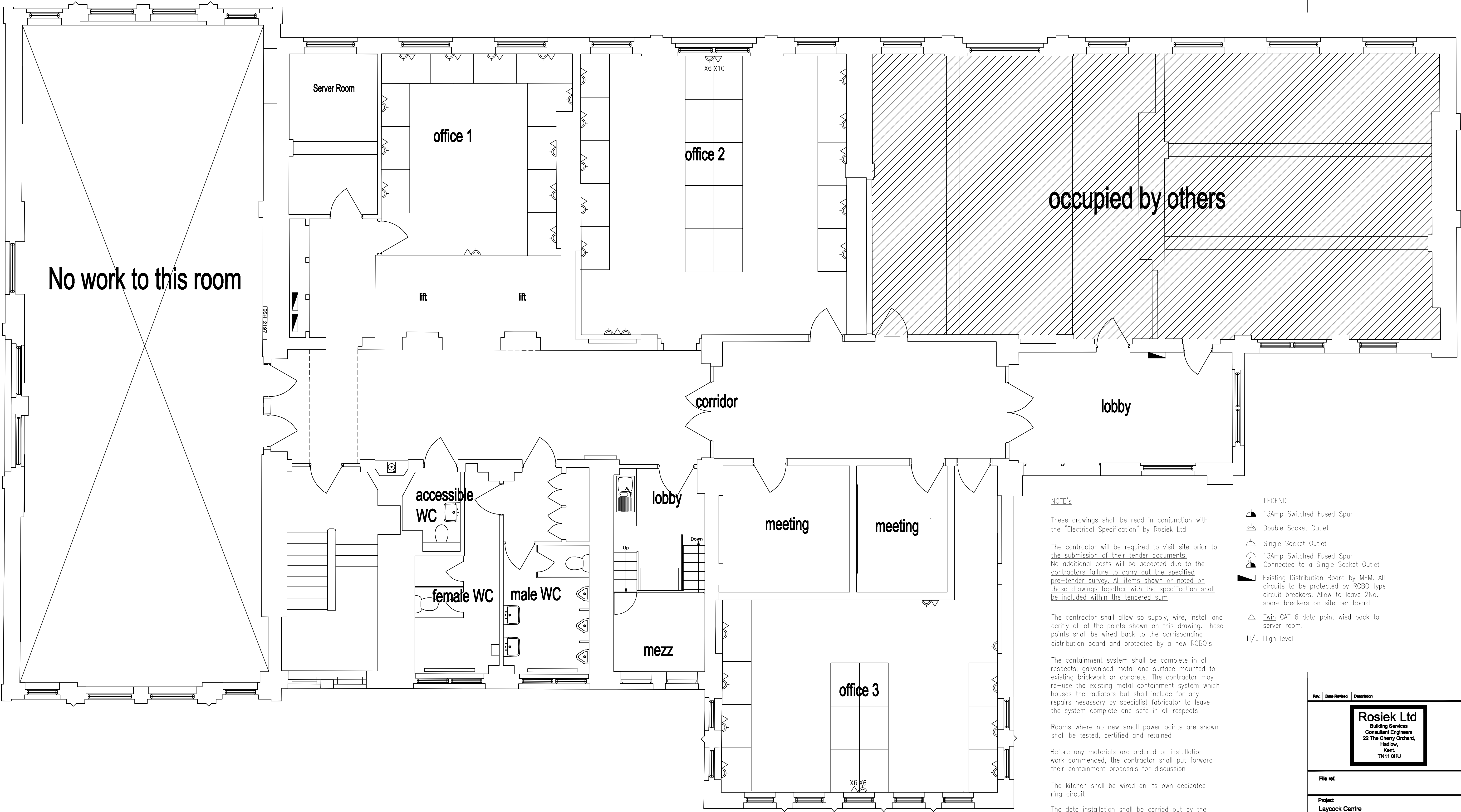


All dimensions are to be checked on site.
Do not scale from this drawing
Use written dimensions only.



occupied by others

No work to this room

corridor

lobby

accessible
WC

female WC

male WC

lobby

meeting

meeting

mezz

office 3

NOTE's

These drawings shall be read in conjunction with the "Electrical Specification" by Rosiek Ltd

The contractor will be required to visit site prior to the submission of their tender documents. No additional costs will be accepted due to the contractors failure to carry out the specified pre-tender survey. All items shown or noted on these drawings together with the specification shall be included within the tendered sum

The contractor shall allow so supply, wire, install and certify all of the points shown on this drawing. These points shall be wired back to the corresponding distribution board and protected by a new RCBO's.

The containment system shall be complete in all respects, galvanised metal and surface mounted to existing brickwork or concrete. The contractor may re-use the existing metal containment system which houses the radiators but shall include for any repairs nessasory by specialist fabricator to leave the system complete and safe in all respects

Rooms where no new small power points are shown shall be tested, certified and retained

Before any materials are ordered or installation work commenced, the contractor shall put forward their containment proposals for discussion

The kitchen shall be wired on its own dedicated ring circuit

The data installation shall be carried out by the clients encumbant contractor, however the contractor shall allow for all necessary holes and additional containment from the server cabinets to the final accessories

LEGEND

- 13Amp Switched Fused Spur
- Double Socket Outlet
- Single Socket Outlet
- 13Amp Switched Fused Spur Connected to a Single Socket Outlet
- Existing Distribution Board by MEM. All circuits to be protected by RCBO type circuit breakers. Allow to leave 2No. spare breakers on site per board
- Twin CAT 6 data point wied back to server room.
- H/L High level

Rev.	Date Revised	Description
<div>Rosiek Ltd Building Services Consultant Engineers 22 The Cherry Orchard, Hadlow, Kent. TN11 0HU</div>		
File ref.		
Project Laycock Centre		
Drawing Title Proposed First Floor Small Power & Data		
Client London Borough of Islington		
Drawing Status Tender		Checked/Approved bj
Scale 1:50	Paper Size A1	Drawn PG
Drawing No. 20090 - P - 204		Date Drawn 01.09.20
Revision		