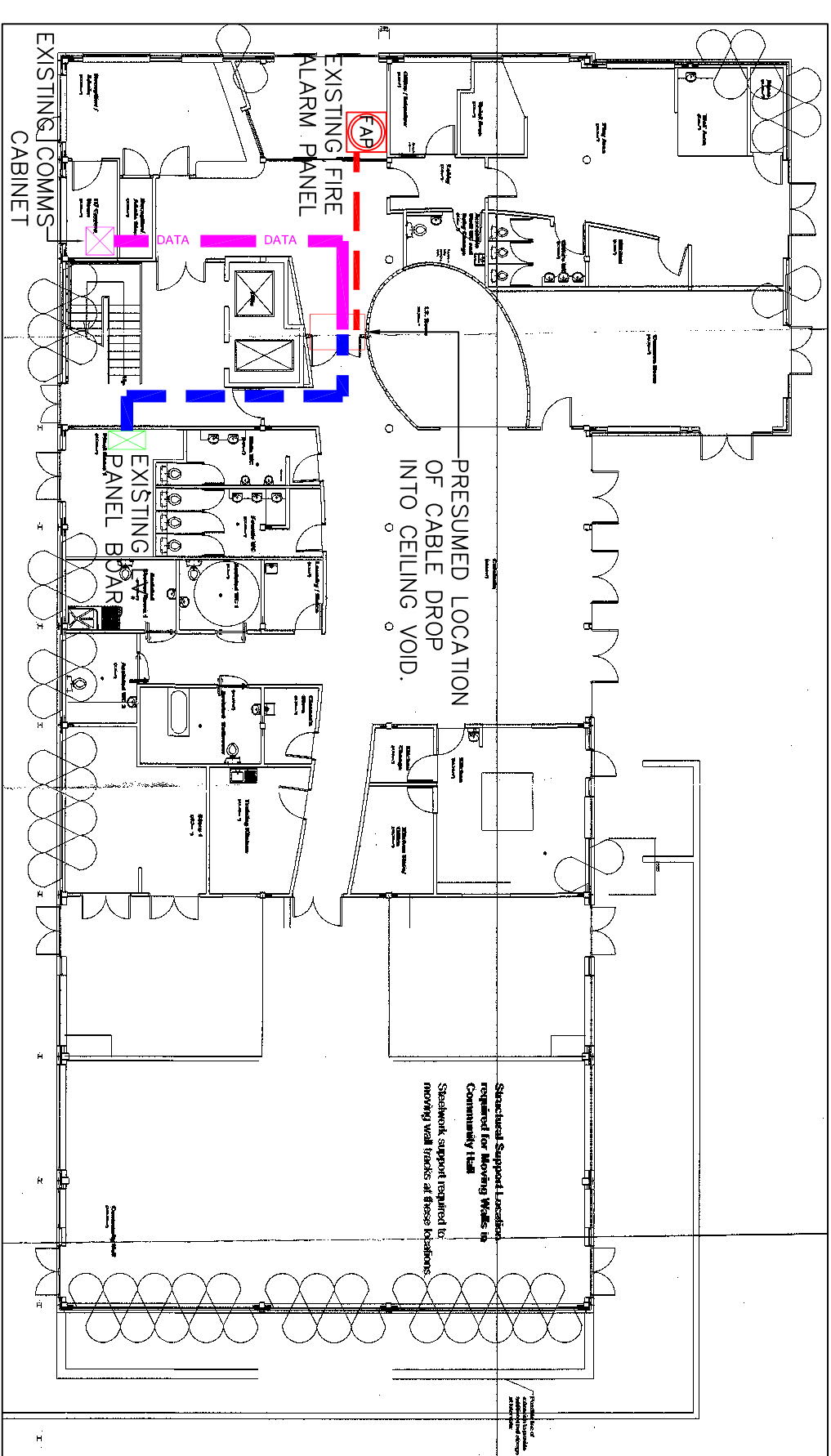


NOTES:

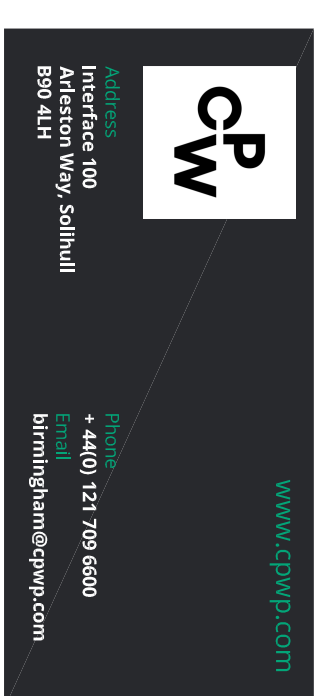
- DO NOT SCALE
- THIS DRAWING IS BEST VIEWED IN COLOUR & MUST BE READ IN CONJUNCTION WITH THE ELECTRICAL SPECIFICATION & ASSOCIATED DOCUMENTS.
- THIS DRAWING MUST BE READ IN CONJUNCTION WITH THE ARCHITECT'S DRAWINGS AND DOCUMENTS.
- THE ELECTRICAL INSTALLATION MUST COMPLY IN FULL WITH THE REQUIREMENTS OF BS7671: 18TH EDITION OF THE IEE WIRING REGULATIONS INCLUDING ANY ASSOCIATED GUIDANCE NOTES & AMENDMENTS.
- THE ELECTRICAL CONTRACTOR SHALL BE RESPONSIBLE FOR THE CO-ORDINATION OF ELECTRICAL SERVICES & MUST LIAISE WITH THE MAIN CONTRACTOR, MECHANICAL CONTRACTOR AND OTHER RELEVANT PARTIES ON SITE.
- THE ELECTRICAL CONTRACTOR SHALL REMOVE AND/OR MODIFY EXISTING CONTAINMENT, LUMINAIRES, FIRE ALARM DEVICES ETC, AS REQUIRED TO FACILITATE THE INSTALLATION OF NEW SERVICES WITHIN THE WORKING AREA.
- THE ELECTRICAL CONTRACTOR IS RESPONSIBLE FOR THE CO-ORDINATION OF ELECTRICAL SERVICES INCLUSIVE OF DEVICE POSITIONS, FINAL LOAD SIZES etc, & MUST LIAISE WITH THE MAIN CONTRACTORS MECHANICAL CONTRACTOR & OTHER RELEVANT PARTIES REGARDING SETTING OUT ON SITE.
- ELECTRICAL CONTRACTOR SHALL UNDERTAKE A SITE SURVEY TO FAMILIARISE THEMSELVES WITH THE BUILDING, EXISTING SERVICES & ASSOCIATED RESTRICTIONS.
- IT MUST BE NOTED THAT ADJACENT AREAS WILL REMAIN OPERATIONAL DURING THE CONTRACT PERIOD & AS SUCH, DUE CARE & ATTENTION MUST BE MADE TO ENSURE ELECTRICAL SUPPLIES ARE UNINTERRUPTED DURING THIS TIME.
- ALL WIRING SYSTEMS SHALL BE FULLY TESTED AND COMMISSIONED IN ACCORDANCE WITH THE IEE WIRING REGULATIONS AND NICEIC RECOMMENDATIONS PRIOR TO PUTTING INTO SERVICE. AT THE END OF THE PROJECT AN NICEIC COMPLETION CERTIFICATE SHALL BE PROVIDED FOR THE WHOLE INSTALLATION.

**LEGEND:**

- 100x100mm LV CABLE TRUNK
- 50mm FIRE ALARM CABLE
- 50mm ELV CABLE BASKET
- 100mm DATA CABLE BASKET
- 100mm LV SUBMAIN TRAY



TRN	FEED	TRADER ISSUE	J	EF
REV	DATE	DESCRIPTION	BY	VE



## STAGE 4

Status

## TENDER ISSUE

Status

Client  
**NHS**  
**Bedfordshire Hospitals**  
NHS Foundation Trust

**Project**  
**PROPOSED CONSULTATION ROOMS**  
**WITHIN EXISTING CHAL END COMMUNITY CENTRE**  
**(FIRST FLOOR)**

### PROPOSED CONTAINMENT LAYOUT

Scale (A1)	Date	By	Ve					
1:50	FEB 22	JF	EF					
Proj ID	Operator	Volume	Leaf	Type	Roll	Water	Steady	Precision
210561	CPW	XX	01	DR	E	10001	SA	T01

CPW Project No. 210581

1272-DESM-00-ZZ-M3-A-0001-Sheet-1272-DESM-01-ZZ-M3-A-401

