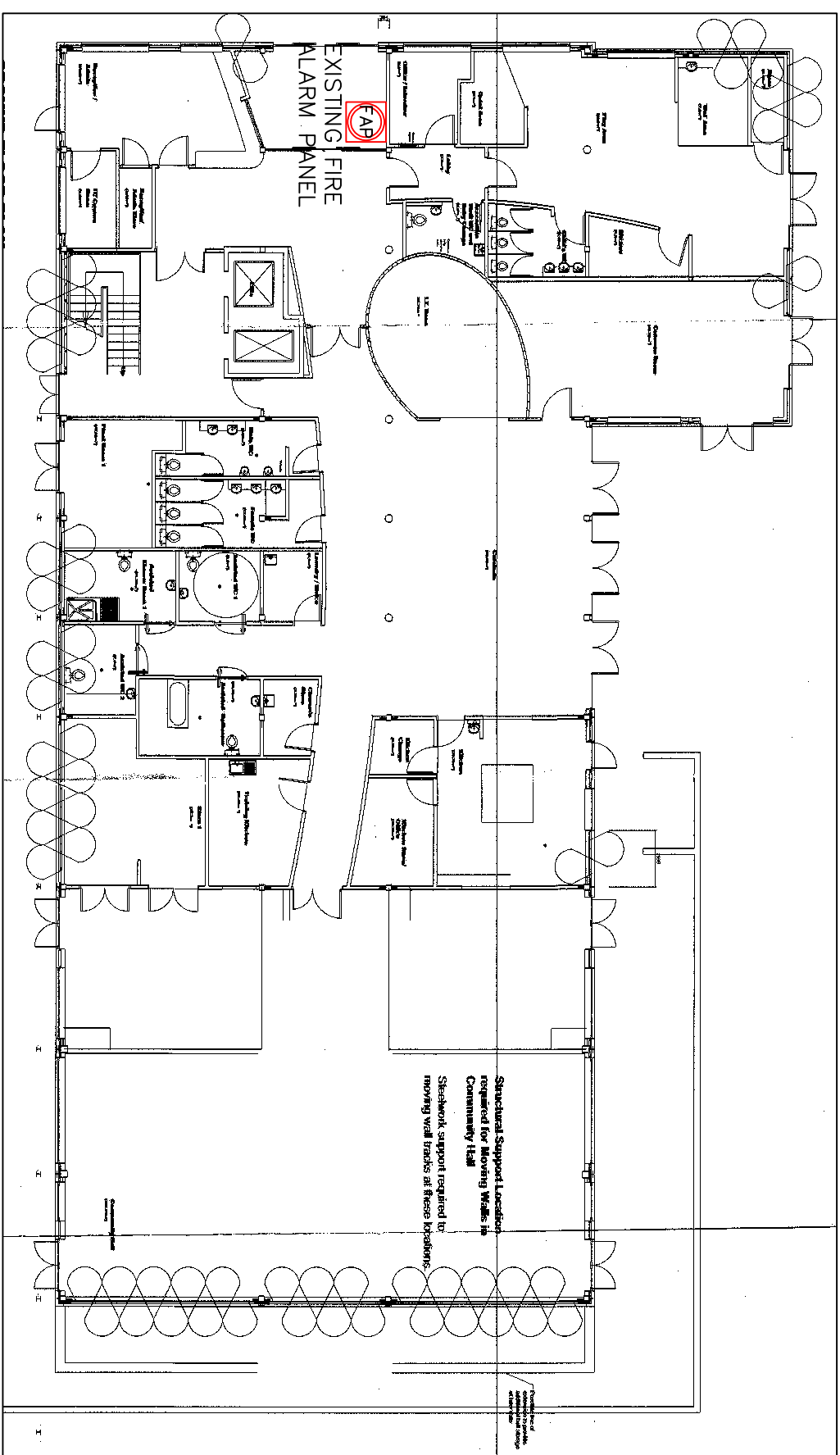


NOTES:

- DO NOT SCALE
- THIS DRAWING IS BEST VIEWED IN COLOUR & MUST BE READ IN CONJUNCTION WITH THE ELECTRICAL SPECIFICATION & ASSOCIATED DOCUMENTS.
- THIS DRAWING MUST BE READ IN CONJUNCTION WITH THE ARCHITECTS DRAWINGS AND DOCUMENTS.
- THE ELECTRICAL INSTALLATION MUST COMPLY IN FULL WITH THE REQUIREMENTS OF BS7671: 18TH EDITION OF THE IEE WIRING REGULATIONS INCLUDING ANY ASSOCIATED GUIDANCE NOTES & AMENDMENTS.
- THE ELECTRICAL CONTRACTOR SHALL BE RESPONSIBLE FOR THE CO-ORDINATION OF ELECTRICAL SERVICES & MUST LIAISE WITH THE MAIN CONTRACTOR, MECHANICAL CONTRACTOR AND OTHER RELEVANT PARTIES ON SITE.
- THE ELECTRICAL CONTRACTOR SHALL REMOVE AND/OR MODIFY EXISTING CONTAINMENT, LUMINAIRES, FIRE ALARM DEVICES ETC. AS REQUIRED TO FACILITATE THE INSTALLATION OF NEW SERVICES WITHIN THE WORKING AREA.
- THE ELECTRICAL CONTRACTOR IS RESPONSIBLE FOR THE CO-ORDINATION OF ELECTRICAL SERVICES INCLUSIVE OF DEVICE POSITIONS, FINAL LOAD SIZES etc. & MUST LIAISE WITH THE MAIN CONTRACTOR MECHANICAL CONTRACTOR & OTHER RELEVANT PARTIES REGARDING SETTING OUT ON SITE.
- ELECTRICAL CONTRACTOR SHALL UNDERTAKE A SITE SURVEY TO FAMILIARISE THEMSELVES WITH THE BUILDING, EXISTING SERVICES & ASSOCIATED RESTRICTIONS.
- IT MUST BE NOTED THAT ADJACENT AREAS WILL REMAIN OPERATIONAL DURING THE CONTRACT PERIOD & AS SUCH, DUE CARE & ATTENTION MUST BE MADE TO ENSURE ELECTRICAL SUPPLIES ARE UNINTERRUPTED DURING THIS TIME.

LEGEND:

- SMOKE DETECTOR  
O – OPTICAL  
S – SOUNDER  
B – BEACON



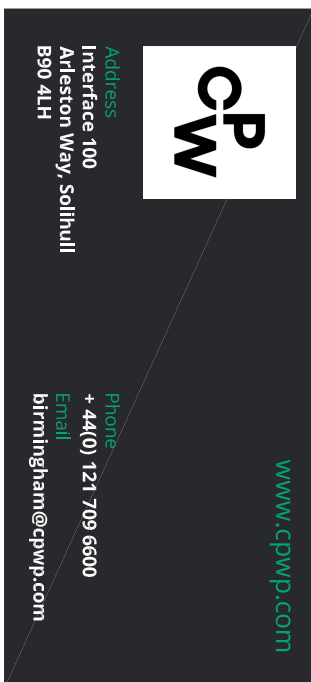
LOCATION OF EXISTING FIRE ALARM PANEL ON GROUND FLOOR (NTS)

## NOTES - FIRE ALARM

1. THE FIRE ALARM SYSTEM SHALL BE DESIGNED AND INSTALLED ACCORDANCE WITH BS 5839.
2. THE FIRE ALARM DEVICES SHALL BE CONNECTED TO THE EXISTING BUILDING FIRE ALARM PANEL (GENS).
3. SPECIALIST IS RESPONSIBLE FOR DETERMINING THE EXACT REQUIREMENTS INCLUDING VERIFYING THAT THERE IS SUFFICIENT CAPACITY ON THE EXISTING SYSTEM TO ACCOMMODATE ADDITIONAL DETECTION & SOUNDER DEVICES AND ENSURING THAT THE SYSTEM BATTERIES WILL MAINTAIN A COMPLETE FIRE ALARM SYSTEM UPON A MAINS FAILURE FOR A PERIOD OF 72 HOURS.
5. THE FIRE ALARM CABLEING SHALL BE FP200 ENHANCED C/W RCD SHEATH, TWO STRIPS OF 0.4M TO BE PROVIDED.

REV	DATE	DESCRIPTION	BY	VE
T11	FEB/22	TENDER ISSUE	J	EF

ANY FIRE ALARM WORKS ARE TO BE UNDERTAKEN BY THE MAINTENANCE CONTRACTOR (CHURCHES FIRE).



## STAGE 4

Status

## TENDER ISSUE

Status

Client

**Bedfordshire Hospitals**  
NHS Foundation Trust

Project

**Project**  
**PROPOSED CONSULTATION ROOMS**  
**WITHIN EXISTING CHAUL END COMMUNITY CENTRE**  
**(FIRST FLOOR)**

(FIKS) FLOOK

### PROPOSED FIRE ALARM LAYOUT

Scale (A1)	Date	By	Ve				
1-50	FEB 22	JF	EF				
Peril	Onset	Wage	Lea	Type	Rate	Stash	Ratio
210551	CPW	XX	01	DR	E	40001	S4 T01

**FIRE ALARM SPECIALIST:**  
Churches Fire & Security  
Fire House, Mayflower Close  
Chandlers Ford SO53 4AR  
TEL: 0333 242 9054