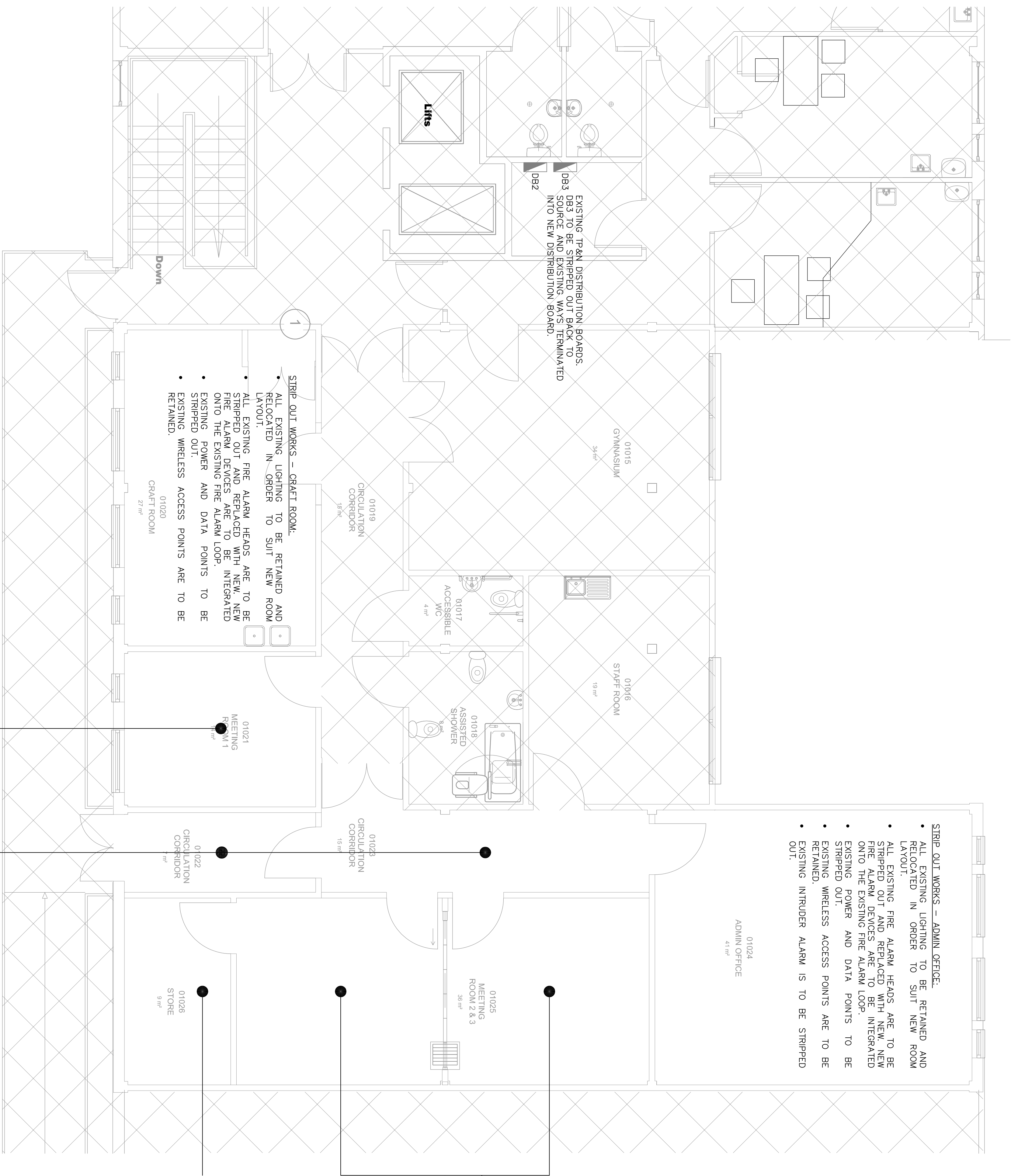


NOTES:

- DO NOT SCALE
- THIS DRAWING IS BEST VIEWED IN COLOUR & MUST BE READ IN CONJUNCTION WITH THE ELECTRICAL SPECIFICATION & ASSOCIATED DOCUMENTS.
- THIS DRAWING MUST BE READ IN CONJUNCTION WITH THE ARCHITECT'S DRAWINGS AND DOCUMENTS.
- THE ELECTRICAL INSTALLATION MUST COMPLY IN FULL WITH THE REQUIREMENTS OF BS7671: 18TH EDITION OF THE IEE WIRING REGULATIONS INCLUDING ANY ASSOCIATED GUIDANCE NOTES & AMENDMENTS.
- THE ELECTRICAL CONTRACTOR SHALL BE RESPONSIBLE FOR THE CO-ORDINATION OF ELECTRICAL SERVICES & MUST LIAISE WITH THE MAIN CONTRACTOR, MECHANICAL CONTRACTOR AND OTHER RELEVANT PARTIES ON SITE.
- THE ELECTRICAL CONTRACTOR SHALL REMOVE AND/OR MODIFY EXISTING CONTAINMENT, LUMINAIRES, FIRE ALARM DEVICES ETC. AS REQUIRED TO FACILITATE THE INSTALLATION OF NEW SERVICES WITHIN THE WORKING AREA.
- THE ELECTRICAL CONTRACTOR IS RESPONSIBLE FOR THE CO-ORDINATION OF ELECTRICAL SERVICES, INCLUSIVE OF DEVICE POSITIONS, FINAL LOAD SIZES etc. & MUST LIAISE WITH THE MAIN CONTRACTOR, MECHANICAL CONTRACTOR & OTHER RELEVANT PARTIES REGARDING SETTING OUT ON SITE.
- ELECTRICAL CONTRACTOR SHALL UNDERTAKE A SITE SURVEY TO FAMILIARISE THEMSELVES WITH THE BUILDING, EXISTING SERVICES & ASSOCIATED RESTRICTIONS.
- IT MUST BE NOTED THAT ADJACENT AREAS WILL REMAIN OPERATIONAL DURING THE CONTRACT PERIOD, & AS SUCH, DUE CARE & ATTENTION MUST BE MADE TO ENSURE ELECTRICAL SUPPLIES ARE UNINTERRUPTED DURING THIS TIME.
- ALL WIRING SYSTEMS SHALL BE FULLY TESTED AND COMMISSIONED IN ACCORDANCE WITH THE IET WIRING REGULATIONS AND NICEIC RECOMMENDATIONS PRIOR TO PUTTING INTO SERVICE. AT THE END OF THE PROJECT AN NICEIC COMPLETION CERTIFICATE SHALL BE PROVIDED FOR THE WHOLE INSTALLATION.



- STRIP OUT WORKS – MEETING ROOM 1:
- ALL EXISTING LIGHTING TO BE RETAINED AND RELOCATED IN ORDER TO SUIT NEW ROOM LAYOUT.
- ALL EXISTING FIRE ALARM HEADS ARE TO BE STRIPPED OUT AND REPLACED WITH NEW, NEW FIRE ALARM DEVICES ARE TO BE INTEGRATED ONTO THE EXISTING FIRE ALARM LOOP.
- EXISTING POWER AND DATA POINTS TO BE STRIPPED OUT AND RELOCATED TO SUIT NEW ROOM LAYOUTS.
- EXISTING WIRELESS ACCESS POINTS ARE TO BE RETAINED

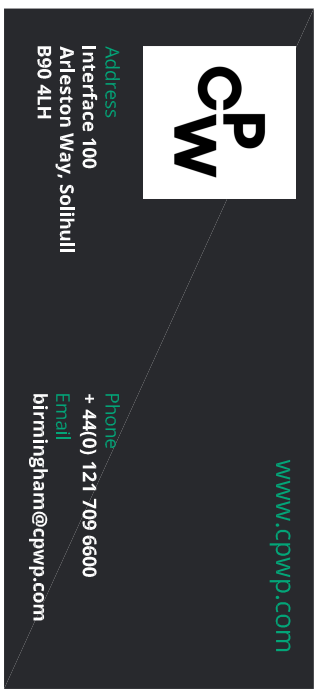
- STRIP OUT WORKS – CORRIDOR:
- ALL EXISTING LIGHTING TO BE RETAINED AND RELOCATED IN ORDER TO SUIT NEW ROOM LAYOUT.
- ALL EXISTING EMERGENCY LIGHTING IS TO BE RETAINED AND RELOCATED TO SUIT NEW ROOM LAYOUT.
- ALL EXISTING FIRE ALARM HEADS ARE TO BE STRIPPED OUT AND REPLACED WITH NEW FIRE ALARM DEVICES ARE TO BE INTEGRATED ONTO THE EXISTING FIRE ALARM LOOP.
- EXISTING POWER AND DATA POINTS TO BE STRIPPED OUT.
- EXISTING WIRELESS ACCESS POINTS ARE TO BE RETAINED.
- EXISTING CCTV COVERS ARE NOT TO BE RETAINED AND PROTECTED

- STRIP OUT WORKS – MEETING ROOM 2&3.
- ALL EXISTING LIGHTING TO BE RETAINED AND RELOCATED IN ORDER TO SUIT NEW ROOM LAYOUT.
- ALL EXISTING FIRE ALARM HEADS ARE TO BE REWIRDED AND RELOCATED WITH NEW WIRE FIRE ALARM HEADS ARE TO BE INTEGRATED ONTO THE EXISTING FIRE ALARM LOOP.
- EXISTING POWER AND DATA POINTS TO BE STRIPPED OUT.
- EXISTING WIRELESS ACCESS POINTS ARE TO BE RETAINED.

- STRIP OUT WORKS — STORE.
- ALL EXISTING LIGHTING TO BE RETAINED AND RELOCATED IN ORDER TO SUIT NEW ROOM LAYOUT.
- ALL EXISTING EMERGENCY LIGHTING IS TO BE RETAINED AND RELOCATED TO SUIT NEW ROOM LAYOUT.
- ALL EXISTING FIRE ALARM HEADS ARE TO BE STRIPPED OUT AND REPLACED WITH NEW FIRE ALARM DEVICES ARE TO BE INTEGRATED ONTO THE EXISTING FIRE ALARM LOOP.
- EXISTING POWER AND DATA POINTS TO BE STRIPPED OUT.
- EXISTING WIRELESS ACCESS POINTS ARE TO BE RETAINED.

ALL EXISTING WIRELESS ACCESS
POINTS ARE TO BE RETAINED

TH	FEF22	TRACER ISSUE	S	EF
REV	DATE	DESCRIPTION	BY	VE



RIBA Stage

STAGE 4

Status

TENDER ISSUE

Client



Bedfordshire Hospitals
NHS Foundation Trust

NHS Foundation Trust

Project

**PROPOSED CONSULTATION ROOMS
WITHIN EXISTING CHAUL END COMMUNITY CENTRE**

(FIRST FLOOR)

EXISTING ELECTRICAL SERVICES LAYOUT

Scale (A1)	Date	By	Ve					
1:50	FEB 22	JF	EF					
Proj ID	Computer	Volume	Lead	Type	Rate	Number	Severity	Reason
210561	CPW	XX	01	DR	EX	10001	S4	T01

210581-CPW-XX-01-DR-EX-10001 S4 T01

CPW Project No. 21155

1272-DESM-01-ZZ-M3-A-301 - Existing GA