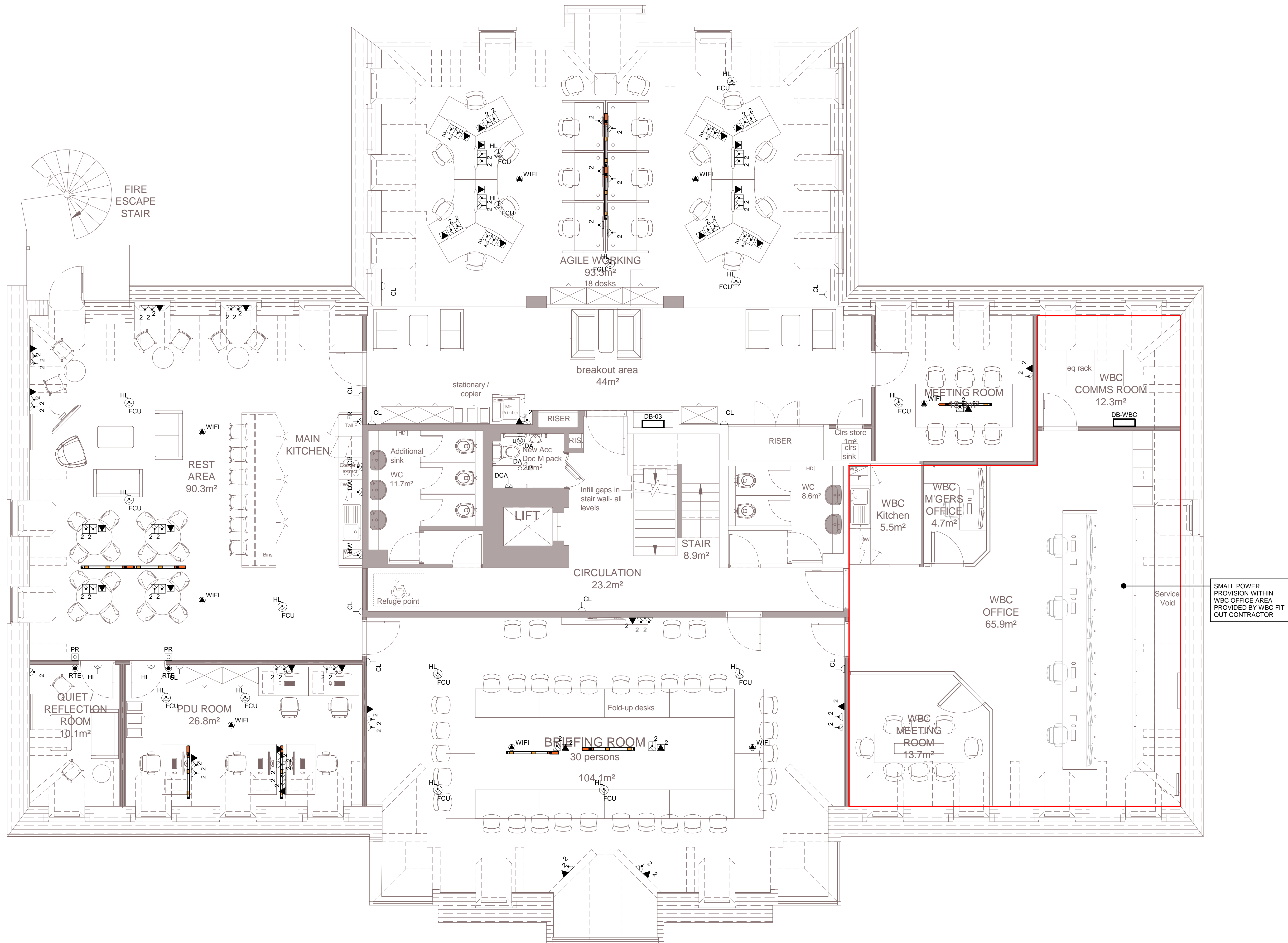


Legend

- 2
Single Phase Socket Twin Switched
- Fused Connection Unit Unswitched
- Fused Connection Unit Switched
- Socket Outlet Unswitched
- 16A
16A SP&N Commando Socket
- 2
Data Socket Double Data (RJ45)
- PR
Proximity Access Card Reader
- Request To Exit Button
- Underfloor Power Track
- DA
Disabled Alarm Pull Cord
- DA
Disabled Indicator with Reset and Lamp
- SEC
Security for CCTV camera
- RTE
Request to exit
- PR
Proximity card reader
- Two compartment DADO trunking
- FCU
Fan coil unit
- RAP
Refuge Alarm Panel with power supply
- AP
External Access control reader to operate Vehicle gate and pedestrian gate

- Abbreviations
- CL Cleaners Socket
- HL High Level
- FR Fridge
- CR Cooker
- HW Hot Water
- DW Dish Washer
- DCA Disabled Alarm



Project

Watford Police
Station Remodelling

UK & IRELAND

Client

Hertfordshire Police
and Crime
Commissioner

Consultant

AECOM
Aldgate Tower
2 Leman Street
London E1 8FA
United Kingdom
Tel +44 (0) 20 7061 7000
www.aecom.com

Notes

1. ALL SERVICES DRAWINGS TO BE READ IN CONJUNCTION WITH OTHER DISCIPLINE DRAWINGS, SCHEDULES AND SPECIFICATIONS.
2. DO NOT SCALE FROM THIS DRAWING.
3. SHOULD ANY DISCREPANCIES BE FOUND WITH THIS DRAWING AND ANY OTHER ASSOCIATED DRAWINGS/SPECIFICATIONS/REPORTS, THIS SHOULD BE BROUGHT TO THE ATTENTION OF ENGINEER IMMEDIATELY.
4. THIS DRAWING SHALL ONLY BE USED FOR THE SPECIFIC SERVICES INTENDED.
5. UNLESS OTHERWISE STATED, ALL MEASUREMENTS IN MILLIMETERS.
6. THE MEP SYSTEMS SHALL COMPLY WITH THE RELEVANT STANDARDS DESCRIBED IN THE SPECIFICATION.
7. LOCATIONS OF ALL SERVICE PROVISIONS ARE INDICATIVE. ALLOW FOR RELOCATIONS WITHIN A 2 METRE RADIUS. FINAL ACCESS AND SETTING OUT OF SERVICES TO BE AGREED WITH ARCHITECT.
8. ALL SOCKET OUTLETS SHALL BE LABELLED WITH THE APPROPRIATE CIRCUIT REFERENCE.
9. ALL SOCKET OUTLETS SHALL BE PROTECTED BY RCBO'S LOCATED IN THE DISTRIBUTION BOARD UNLESS OTHERWISE STATED.
10. WBC FITOUT CONTRACTORS TO LIAISE WITH THE MAIN CONTRACTOR TO COORDINATE SERVICES ON THE ROOF AREA. EARTH AND LIGHTNING PROTECTION BONDING IS TO BE PROVIDED BETWEEN THE SATELLITE/AERIAL EQUIPMENT AND EXISTING SYSTEMS.

Issue/Revision

Rev.	Date	Description	Drawn/Checked/Approved
T1	22/09/22	Tender Issue	DRW/CSK/AG

Key Plan

Suitability Status

S0 - Initial Status

Project Number

60671544

Sheet Title

Small Power & Ancillaries Layout
Second Floor Layout

Sheet Number

WPS-ACM-00-02-DR-EL-421004

Scale: 1:50@A0

Rev: T1