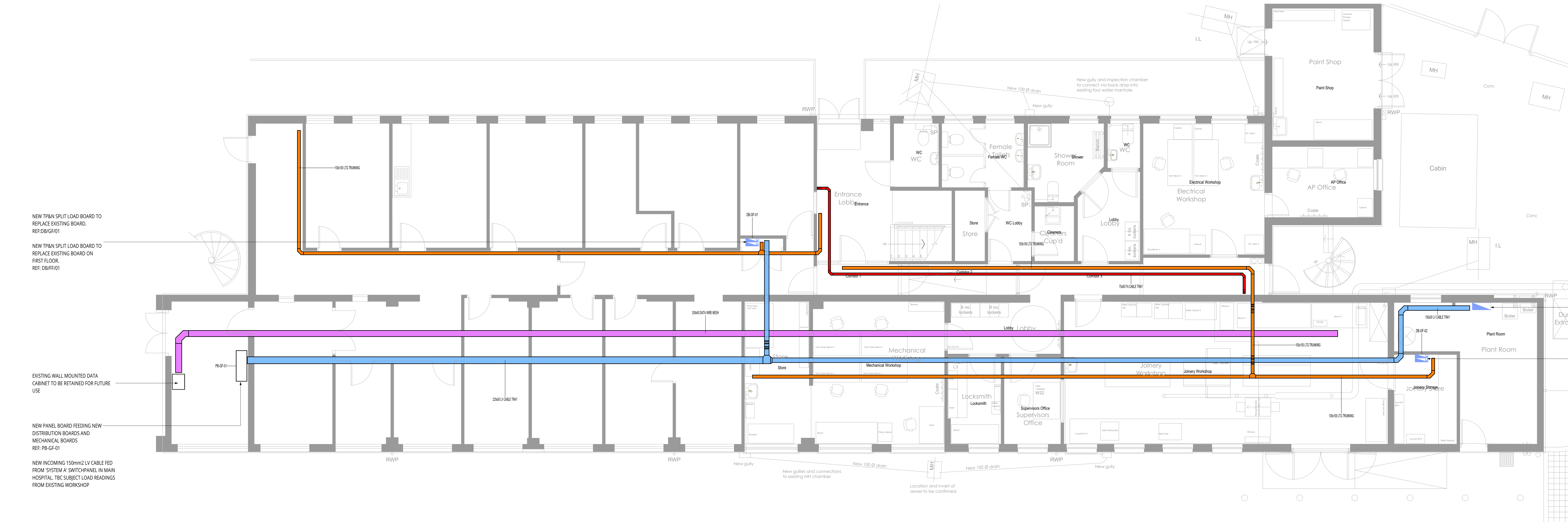


LEGEND

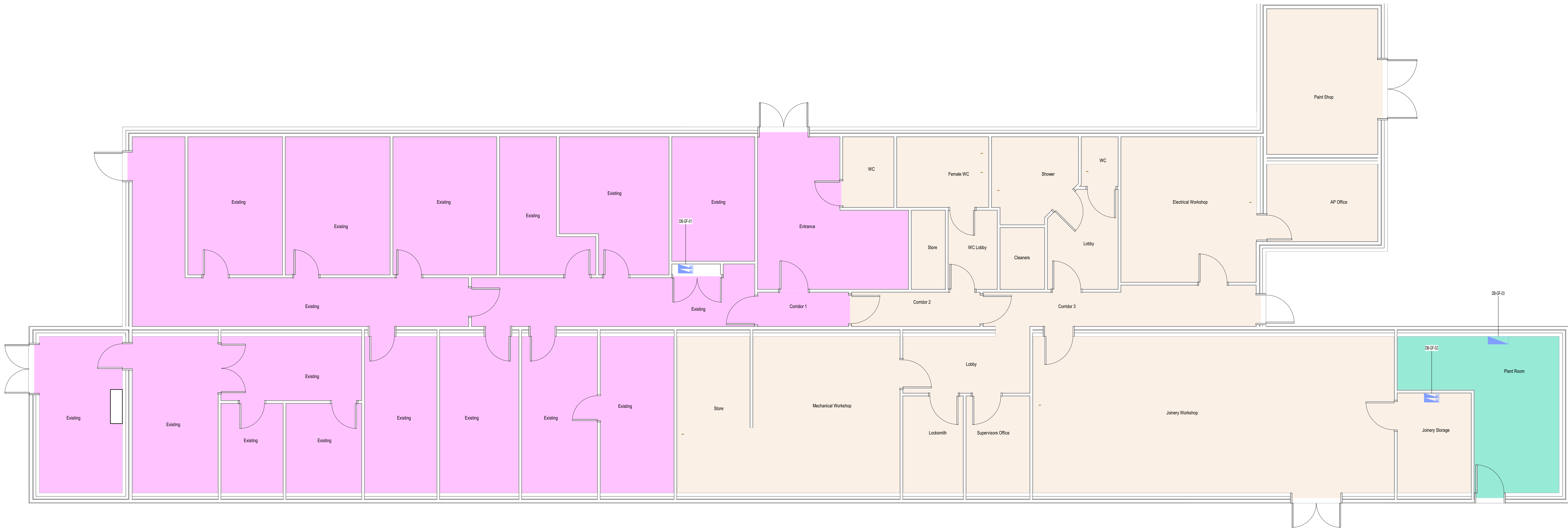
- LY SUBMAIN TRAY
- LIGHTING & POWER TRUNKING
- FIRE ALARM CABLE TRAY
- ELV TRUNKING



1 Electrical Containment Layout - Ground Floor  
1:30

Legend

- DB-GF-01
- DB-GF-02
- DB-GF-03



2 Distribution Board Zoning Strategy - Ground Floor  
1:30

© 2023 COUCH PERRY WILKES

HEALTH AND SAFETY INFORMATION

Standard hazards and risks may not necessarily be identified on this drawing. The caution symbols that are identified, but not limited to, related to specific hazards and risks associated with this type of project. Reference should be made to the DRA for further details.

NOTES

- THIS DRAWING SHALL BE READ IN CONJUNCTION WITH THE CPW SPECIFICATION AND ALL RELEVANT ARCHITECTS AND ENGINEERS DRAWINGS.
- THE ELECTRICAL CONTRACTOR SHALL COORDINATE ALL ELECTRICAL SERVICES WITH MECHANICAL SERVICES & STRUCTURE.
- ALL ITEMS OF EQUIPMENT MUST BE LOCATED TO FACILITATE SUITABLE ACCESS AND MAINTENANCE.
- THE ELECTRICAL INSTALLATIONS MUST COMPLY IN FULL WITH THE REQUIREMENTS OF BS7671 18TH EDITION WIRING REGULATIONS.
- THE CONTAINMENT SHOWN ON THIS DRAWING IS A MINIMUM REQUIREMENT OF THE MAIN RUNS ONLY. ALL BENDS, TEES, BRACKETS ETC. AND SECONDARY CONTAINMENT WILL BE PROVIDED TO FORM A COMPLETE SYSTEM.
- FIRE BARRIERS TO BE INSTALLED WHEREVER THE CONTAINMENT PASSED THROUGH FIRE COMPARTMENT WALLS AND CEILING CAVITY BARRIERS.
- THE CONTRACTOR SHALL ALLOW FOR EARTHING AND BONDING IN ACCORDANCE WITH BS7671 AND MANUFACTURERS RECOMMENDATIONS.
- ELECTRICAL CONTAINMENT ROUTES HAVE BEEN SHOWN FOR COSTING PURPOSES ONLY. EXISTING ELECTRICAL CONTAINMENT ROUTES ARE CURRENTLY UNKNOWN. FURTHER COORDINATION TO BE CARRIED OUT.
- EXISTING BUILDERS WORK HOLES TO BE REUSED FOR NEW CONTAINMENT. EXISTING FIRE STOPPING TO BE REVIEWED BY SPECIALIST.
- DO NOT SCALE FROM THIS DRAWING.

NEW SPAN DISTRIBUTION BOARDS TO FEED NEW MECHANICAL UNITS

EXISTING DISTRIBUTION BOARD FROM EXISTING WORKSHOP TO BE RELOCATED AND RECONNECTED NEW NEW PANEL BOARD. DISTRIBUTION BOARD TO BE DE-RATED.

THIS DRAWING IS AN INDICATIVE LAYOUT ONLY. DEMONSTRATING THE CONCEPTUAL REQUIREMENTS CORRELATING WITH THE AGREED SOLUTIONS. THE PURPOSE OF THIS DRAWING IS TO DEMONSTRATE DESIGN INTENT, FOR FURTHER DEVELOPMENT BY THE RELEVANT SERVICES DESIGNER ONLY.

CPW  
www.cpw.com  
Third Floor, Balver House  
54, Gresham Street, London  
W1R 6BB  
Phone  
+44 (0) 203 870 4750  
Email  
london@cpw.com

STAGE 4

TENDER

CLIENT  
NHS TRUST

PROJECT  
CTC WORKSHOP RELOCATION

PROPOSED ELECTRICAL DISTRIBUTION LAYOUT

GROUND FLOOR

SCALE	DATE	BY	VE
1:50	JULY 2023	WS	KW

Rev	By	Date	Description
1	WS	01/07/23	Issue for Tender

230114-CPW-ZZ-00-DR-E-211001 S4 T01

CPW Project No. 230114

LIMITED FILES  
d230118 Proposed Layout