



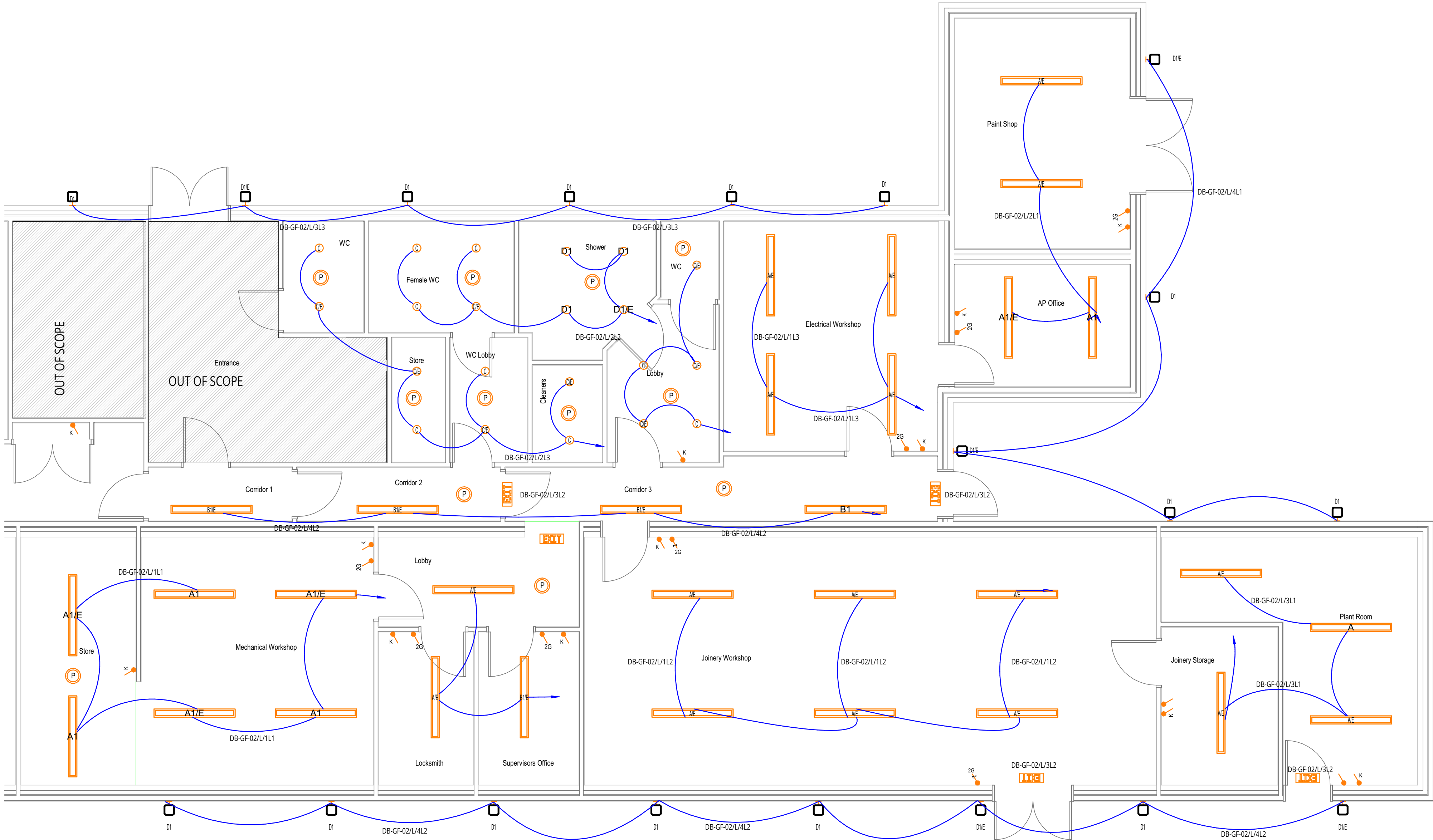


LEGEND:

- A 1500mm LINEAR SURFACE LED LUMINAIRE 41W, 7070lm, DIRECT, IP66 AS A-LINE FROM THORLUX
- A1 1500mm LINEAR SURFACE LED LUMINAIRE 20W, 3670lm, DIRECT, IP66 AS A-LINE FROM THORLUX
- B1 1500mm LINEAR SURFACE LED LUMINAIRE 30W, 3775lm, OPAL, IP40 AS HI-BAR FROM THORLUX
- C1 206mm (Ø) SURFACE LED DOWNLIGHT 16W, 2210lm, DIRECT, IP40 AS G3 PRO FROM THORLUX
- D1 340mm (Ø) SURFACE LED BULKHEAD 11W, 1490lm, DIRECT, IP66 AS COBALT FROM THORLUX
- E EMERGENCY VERSION
-  PRESENCE DETECTOR
- ABSENCE DETECTOR TO BE BUILT INTO LUMINAIRE
-  1-WAY LIGHT SWITCH (#G DENOTES NUMBER OF GANGS)
-  EMERGENCY TEST KEY SWITCH
-  EXIT SIGN (COMPLETE WITH 3 HOUR BATTERY BACK UP)



THIS DRAWING IS AN INDICATIVE LAYOUT ONLY, DEMONSTRATING THE CONCEPTUAL REQUIREMENTS CORRELATING WITH THE AGREED SOLUTIONS. THE PURPOSE OF THIS DRAWING IS TO DEMONSTRATE DESIGN INTENT, FOR FURTHER DEVELOPMENT BY THE RELEVANT SERVICES DESIGNER ONLY.

© 2023 COUCH PERRY WILKES

All scaled dimensions taken from this drawing are to be verified on site


HEALTH AND SAFETY INFORMATION

Standards hazards and risks may not necessarily be identified on this drawing. The caution symbols that are identified, but not limited to, related to specific hazards and risks associated with this type of project.

Reference should be made to the DRA for further details.

NOTES

1. THIS DRAWING SHALL BE READ IN CONJUNCTION WITH THE CPW SPECIFICATION AND ALL RELEVANT ARCHITECTS AND ENGINEERS DRAWINGS.
2. THE ELECTRICAL CONTRACTOR SHALL COORDINATE ALL ELECTRICAL SERVICES WITH MECHANICAL SERVICES & STRUCTURE.
3. FINAL SETTING OUT OF EQUIPMENT SHALL BE TO THE ARCHITECTS ROOM LAYOUTS AND REFLECTIVE CEILING PLANS. CONTRACTOR TO ENSURE COORDINATION.
4. ALL ITEMS OF EQUIPMENT MUST BE LOCATED TO FACILITATE SUITABLE ACCESS AND MAINTENANCE.
5. THE ELECTRICAL INSTALLATIONS MUST COMPLY IN FULL WITH THE REQUIREMENTS OF BS7671 18TH EDITION WIRING REGULATIONS.
6. EXIT SIGNS SHALL BE PROVIDED WITH INTEGRAL 3HR BATTERY BACK UP.
7. EXIT SIGNS INDICATED FOR TENDER PURPOSES ONLY. THE ELECTRICAL CONTRACTOR SHALL ENSURE THAT EXIT SIGNS ARE PROVIDED INLINE WITH THE LATEST FIRE STRATEGY.
8. EMERGENCY TEST KEY SWITCHES FOR WC, SHOWER AND GENERAL CLEANERS STORE TO BE SITUATED IN RISER.
9. EXISTING LIGHTING FROM EXISTING WORKSHOP TO BE RELOCATED AND REUSED IN NEW SPACE.
10. DO NOT SCALE FROM THIS DRAWING.

T01	04/08/2023	STAGE 4 TENDER ISSUE		WS	KW
REV	DATE	DESCRIPTION		BY	VE
<div><div></div><div>www.cpw.com</div></div> <div><div>Address</div><div>Third Floor, Bolsover House</div><div>5-6 Clipstone Street, London</div><div>W1W 6BB</div></div> <div><div>Phone</div><div>+44 (0) 203 870 4790</div><div>Email</div><div>london@cpw.com</div></div>					
RIBA STAGE					

STAGE 4

STATUS

PRELIMINARY

CLIENT

NHS TRUST

PROJECT

CTC WORKSHOP RELOCATION

DRAWING TITLE
ELECTRICAL SERVICES
LIGHTING LAYOUT

SCALE (A1)	DATE	BY	VE
1:50	JULY 2023	WS	KW

Proj ID	Originator	Volume	Level	Type	Role	Number	Suitability	Revision
230114	CPW	ZZ	00	DR	E	220001	S4	T01

230114-CPW-ZZ-00-DR-E-220001 S4 T01
CPW Project No. 230114

LINKED FILES

d230518 Proposed Layout