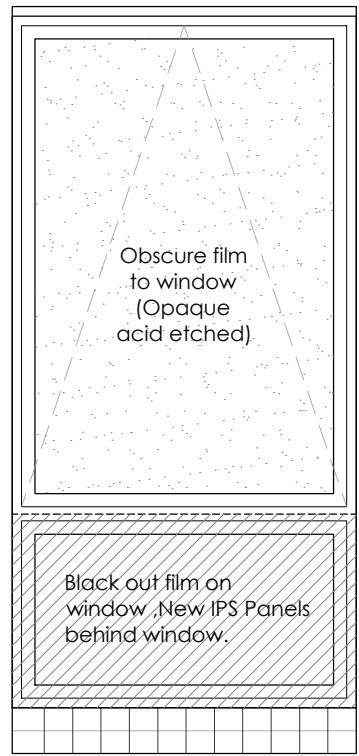
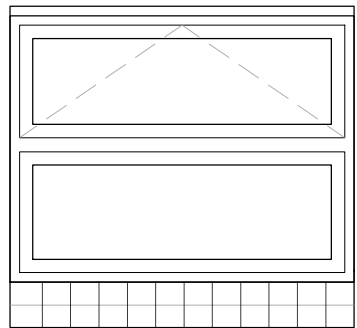


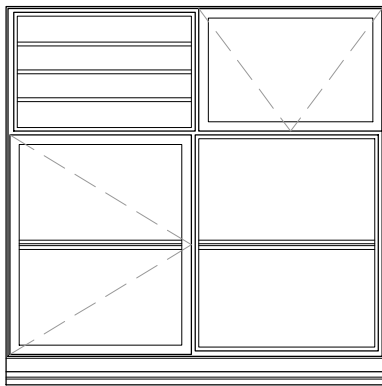
TYPE W1  
Scale 1:20  
Existing window overhaul



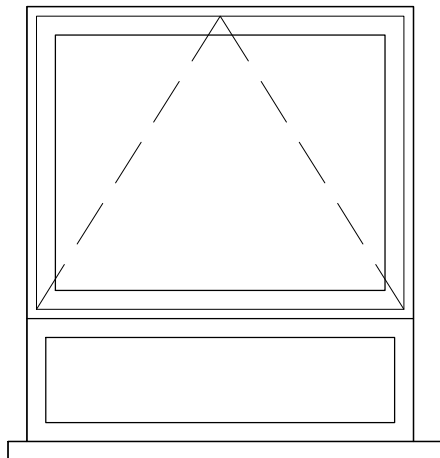
TYPE W2  
Scale 1:20  
Existing window overhaul



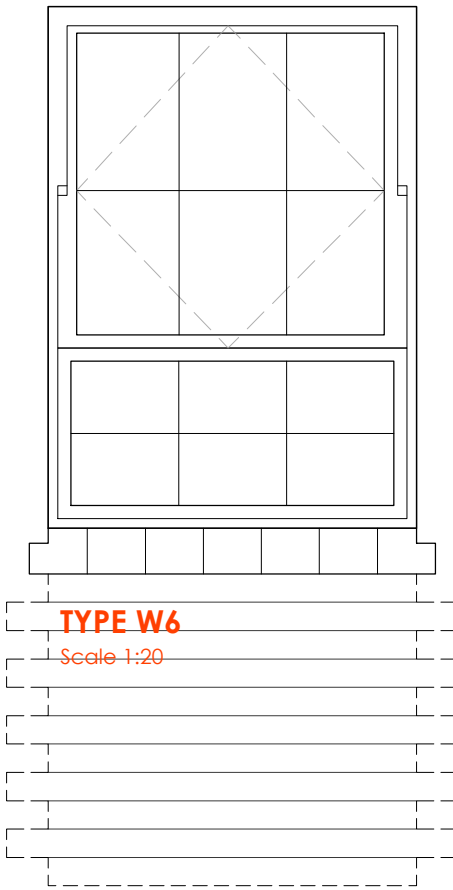
TYPE W3  
Scale 1:20  
Existing window overhaul



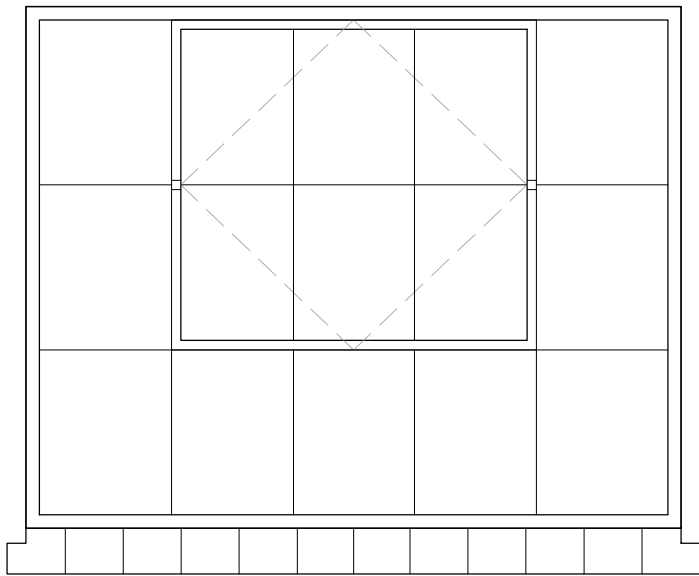
TYPE W4  
Scale 1:20  
Existing window overhaul



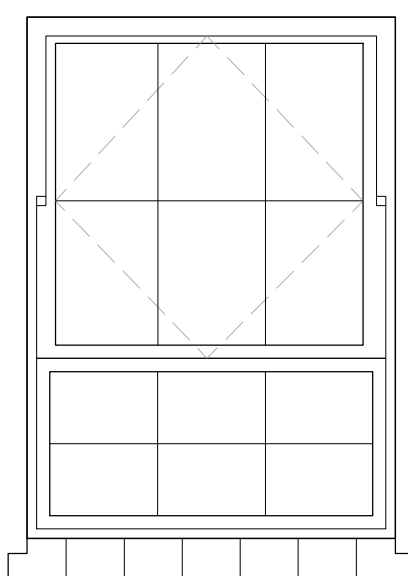
TYPE W5  
Scale 1:20  
New opening to be formed to allow for installation of new double glazed window  
  
Only new window  
Existing window overhaul



TYPE W6  
Scale 1:20  
  
Door to be removed and opening partially bricked up to allow for installation of refurbished window  
  
Set aside window  
Existing window overhaul



TYPE W7  
Scale 1:20  
Existing window overhaul



TYPE W8  
Scale 1:20  
Existing window overhaul

### Window Schedule Ground Floor


Win. No.	Location	Type	Structural Opening		Notes
			W (mm)	H (mm)	
WG.001	WC - Existing window	W3	910	729	Over haul and paint.
WG.002	Female WC - Existing window	W3	910	729	Over haul and paint.
WG.003	Female WC - Existing window	W3	910	729	Over haul and paint.
WG.004	Shower room- Existing window	W2	910	1854	Over haul and paint. Obscure film to upper window, Black out film lower ,New IPS Panels behind window.
WG.005	WC- Existing window	W2	910	1854	Over haul and paint. Obscure film to upper window, Black out film lower ,New IPS Panels behind window.
WG.006	Electrical Workshop- Existing window	W1	1210	1300	Over haul and paint.
WG.007	Electrical Workshop- Existing window	W1	1210	1300	Over haul and paint.
WG.008	AP Office- New window	W5	1023	1200	Refer to detail on Drg. 5087.342
WG.009	Plant Room- Existing window	W4	1000	1000	Over haul and paint.
WG.010	Joinery Workshop- Existing window	W8	974	1379	Over haul and paint.
WG.011	Joinery Workshop- Existing window	W8	974	1379	Over haul and paint.
WG.012	Joinery Workshop- Existing window set aside	W6	974	1379	Refer to detail on Drg. 5087.342
WG.013	Joinery Workshop- Existing window	W8	974	1379	Over haul and paint.
WG.014	Supervisors Office- Existing window	W8	974	1379	Over haul and paint.
WG.015	Locksmith- Existing window	W8	974	1379	Over haul and paint.
WG.016	Mechanical Workshop- Existing window	W7	1733	1379	Over haul and paint.
WG.017	Mechanical Workshop- Existing window	W7	1733	1379	Over haul and paint.
WG.018	Mechanical Workshop- Existing window	W7	1733	1379	Over haul and paint.

NOTE :-SCHEDULE TO BE READ IN CONJUNCTION WITH FLOOR PLAN S DRG. No. 100 - 110

TENDER ISSUE

T2	04:08:23	TENDER ISSUE	JOH	DG
T1	13.07.23	TENDER ISSUE	TJM	TC
REV	DATE	DESCRIPTION	BY	APP'D

CLIENT


South London and Maudsley   
NHS Foundation Trust

PROJECT  
Clinical Treatment Centre  
Maudsley Hospital  
Denmark Hill  
London. SE5 8AZ

DRAWING TITLE  
Windows Elevation Details and  
Window Schedule

DATE	July 2023	DWG. No.	5087.341	REV.	T2
SCALE	1:20 (A1)				
DRAWN BY:	TJM	DATED	12.07.2023		
CHECKED BY:	TAJC	DATED	17.07.2023		

AK DESIGN PARTNERSHIP LLP  
CHARTERED BUILDING CONSULTANCY  
BUILDING SURVEYORS  
BUILDING DESIGNERS  
PROJECT MANAGERS



CEME INNOVATION CENTRE  
CEME CAMPUS  
MARSH WAY  
RAINHAM  
RM13 8EU

TEL: 020 8596 7070  
E-MAIL: office@akdesign.co.uk  
WEB SITE: www.akdesign.co.uk

