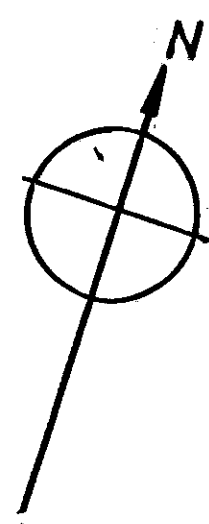
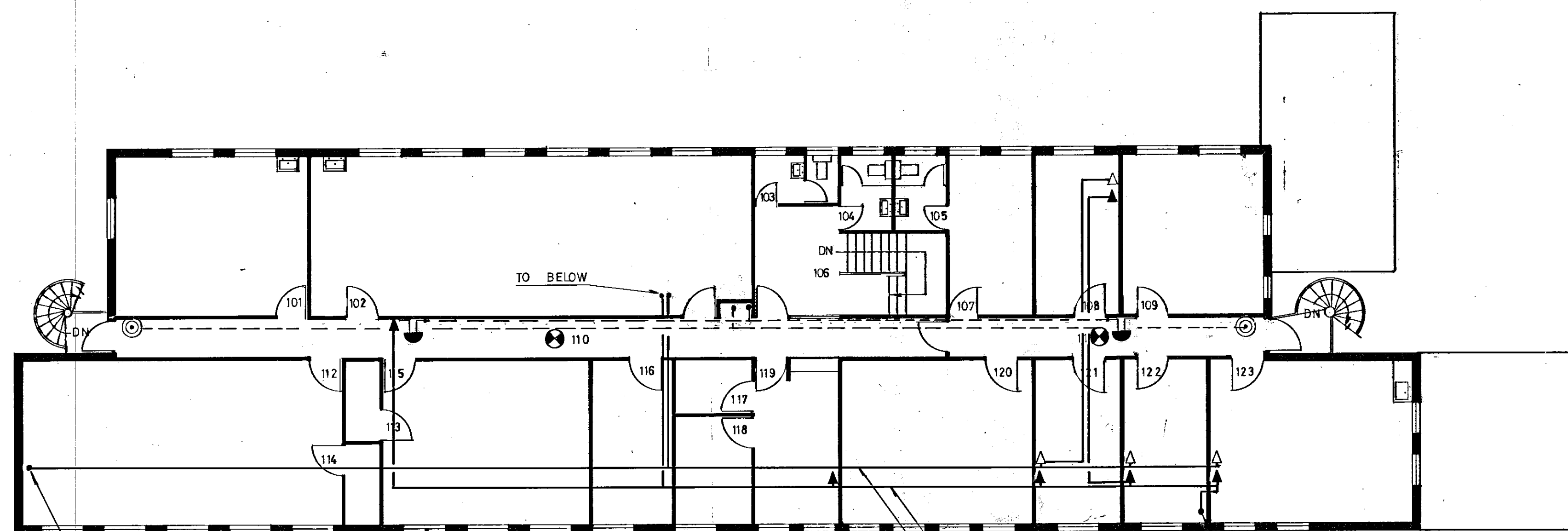


M/35/C8/700

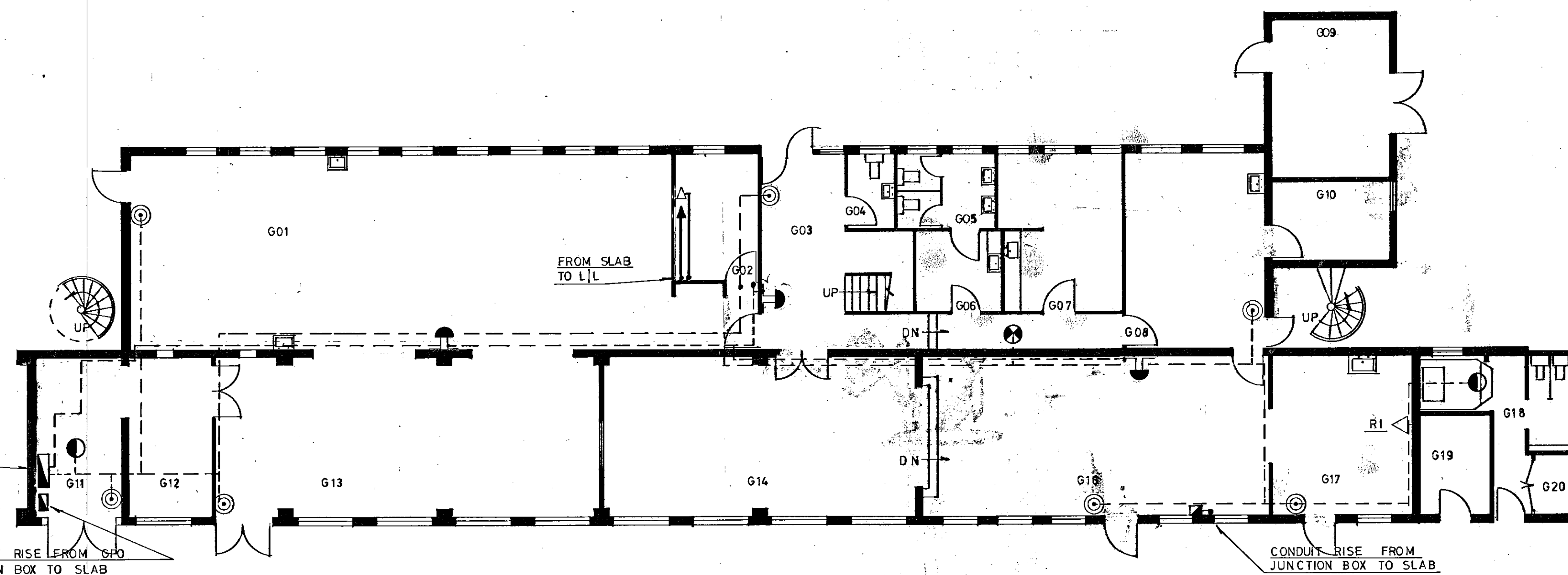
Cross reference  
to M/35/21/8



KEY	
	SMOKE DETECTOR
	HEAT DETECTOR
	REMOTE INDICATOR
	BELL
	BREAK GLASS UNIT
	ELECTRIC LOCK
	GPO TELEPHONE
	INTERNAL TELEPHONE



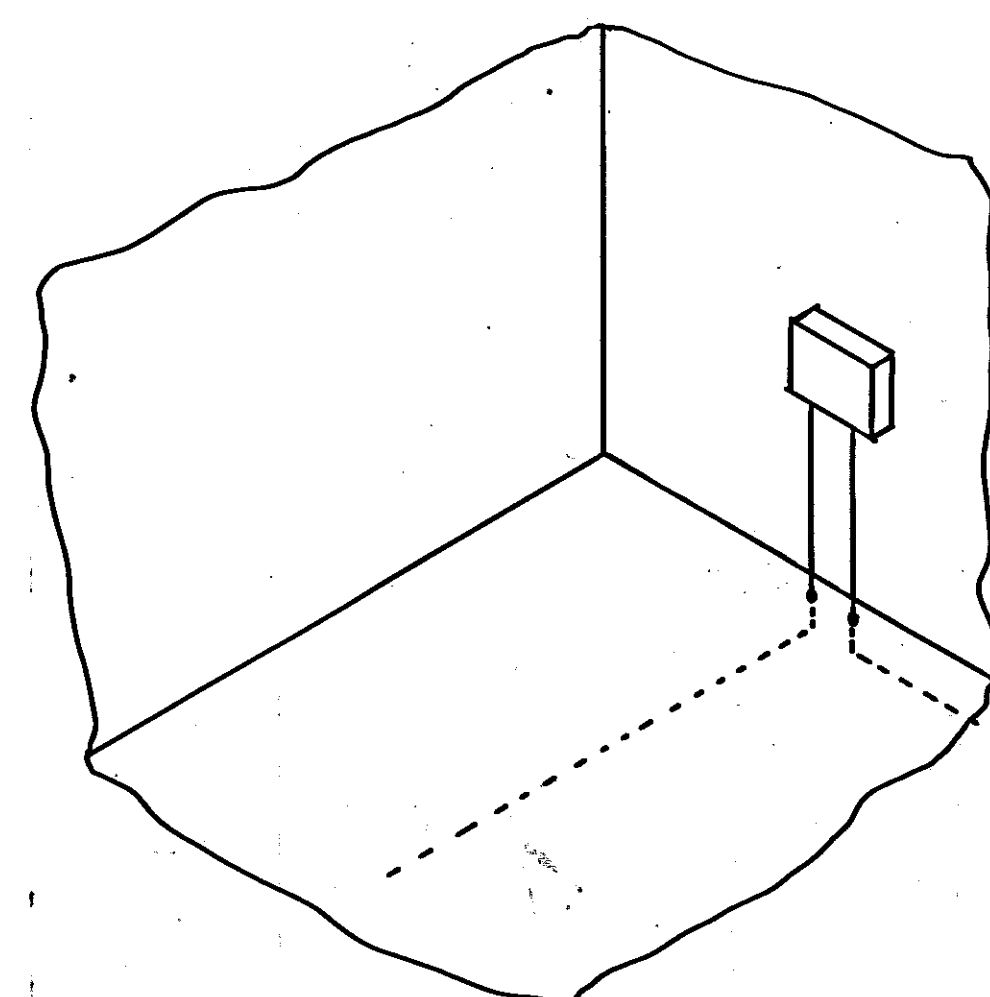
FIRST FLOOR PLAN



GROUND FLOOR PLAN

NOTES

1. ALL CONDUITS FOR TELEPHONES SHALL BE 25mm AND LAID IN THE FIRST FLOOR SLAB.
2. ALL TELEPHONE OUTLET POINTS SHALL TERMINATE WITH OUTLET PLATES.
3. DRAW WIRES SHALL BE INCLUDED THROUGHOUT THE TELEPHONE SYSTEMS.
4. FIRE ALARM RUNS ARE SCHEMATIC AND ARE ONLY INTENDED TO INDICATE THE ITEMS OF EQUIPMENT TO BE CONNECTED TOGETHER.
5. DETECTOR LINES SHALL BE MONITORED.
6. BELL LINES AND ELECTRIC LOCK LINES UNMONITORED.
7. THIS DRAWING SHALL BE READ IN CONJUNCTION WITH ALL TENDER DRAWINGS.



IT SHOULD BE NOTED THAT ALL TELEPHONE OUTLET POINTS ON BOTH TELEPHONE SYSTEMS SHALL BE USED AS DRAW IN POINTS.

DATE	REVISION
A 18-1-79	CORRIDOR 110 EXTENDED. BGU RESITED. FIRE EXIT G01 ADDED. BGU ADDED. G11 DOORS MODIFIED. BGU RESITED. G14 SINK OMITTED. G17 SINK RESITED. ELS ON 2 FIRST FLOOR FIRE EXITS OMITTED AND ALL ASSOCIATED CABLING

MAUDSLEY HOSPITAL

O.T. DEPARTMENT

EXTENSION OF ASSESSMENT UNIT

TELEPHONES & FIRE ALARM

scale 1:100  
date 1-3-78  
drawing no. M/OT/252. A  
drawn by. MLW.

GROUP ENGINEERS DEPARTMENT  
BETHLEM ROYAL HOSPITAL  
MONKS ORCHARD ROAD  
BECKENHAM  
KENT BR3 3BX